

2659 OSV



Vessel Characteristics

Length, Overall:	252 ft	76.8 m
Beam:	54.1 ft	16.5 m
Depth:	19 ft	5.8 m
Maximum Draft:	15.8 ft	4.8 m
Light Draft:	6.6 ft	2 m
Minimum Height:	70.5 ft	21.5 m
Freeboard:	3.3 ft	1 m
Displacement:	4,430 lt	4,500 mt
Clear Deck Space:	177 x 45 ft	54 x 14 m
Clear Deck Area:	7,940 ft ²	740 m ²
Deck Strength AFT:	1,020 lb/ft ²	5 t/m ²
Class Notations:	ABS: +A1, (E), +DPS-2, +AMS, Offshore Support Vessel	

Capacities

Deck Cargo:	1,180 lt	1,200 t
Fuel Oil:	143,000 gal	540 m ³
Potable Water:	17,200 gal	65.1 m ³
Fresh Water:	212,000 gal	800 m ³
Drill/Ballast Water:	126,000 gal	480 m ³
Bulk Tanks (4 tanks):	7,130 ft ³	200 m ³
Liquid Mud (2.5 SG*):	8,220 bbl	1,310 m ³

*Max Structural Specific Gravity

Further specifications

Machinery

Diesel Electric Vessel			
Propulsive/Total HP:	4,200 / 6,110		
Z-Drives:	Yes		
Propellers (2):	2100HP Steerprop SP 20		
Kort Nozzles:	2		
Primary Generators (2):	1,820 kw	480 v	60 hz
Driven by:	Cummins QSK 60		
Secondary Generators (1):	910 kw	480 v	60 hz
Driven by:	Cummins KTA 38		
Emergency Generators (1):	170 kw	480 v	60 hz
Driven by:	Cummins 6 CTA 8.3		
Bow Thruster (2):	BERG 12S TT		
Driven by:	746kW Electric Motor		
Total Thrust:	25 st	22.7 mt	

Deck Equipment

Anchors (2):	2100 KG STOCKLESS
Anchor Chain:	220 m of 38 mm chain per side
Windlass:	McElroy MCSW-150-25E

Accommodations

No. of Berths:	42
Cabins:	2x1-man, 2x2-man, 3x4-man & 4x6-man
Certified to Carry:	42
Galley seating:	14

Registration

Year Built: 2004	
Country Built:	USA

Performance*

Fuel Consumption Vs Speed		
Maximum:	17.3 m ³ /day (190 gph) @ 12.5 knots	
Cruising:	13.4 m ³ /day (150 gph) @ 11 knots	
Economical:	10.9 m ³ /day (120 gph) @ 10 knots	
Standby:	1.9 m ³ /day (20.8 gph) @ 0 knots	
Range @ 11 Knots:	10,600 nm	
Transfer Rates		
Fuel Oil:	660 gpm @ 200 ft	150 m ³ /h @ 61 m
Fresh Water:	660 gpm @ 200 ft	150 m ³ /h @ 61 m
Drill/Ballast Water:	550 gpm @ 200 ft	120 m ³ /h @ 61 m
Bulk:	29.7 cfm @ 180 ft	50.4 m ³ /h @ 56 m
Liquid Mud:	650 gpm @ 200 ft	150 m ³ /h @ 60 m

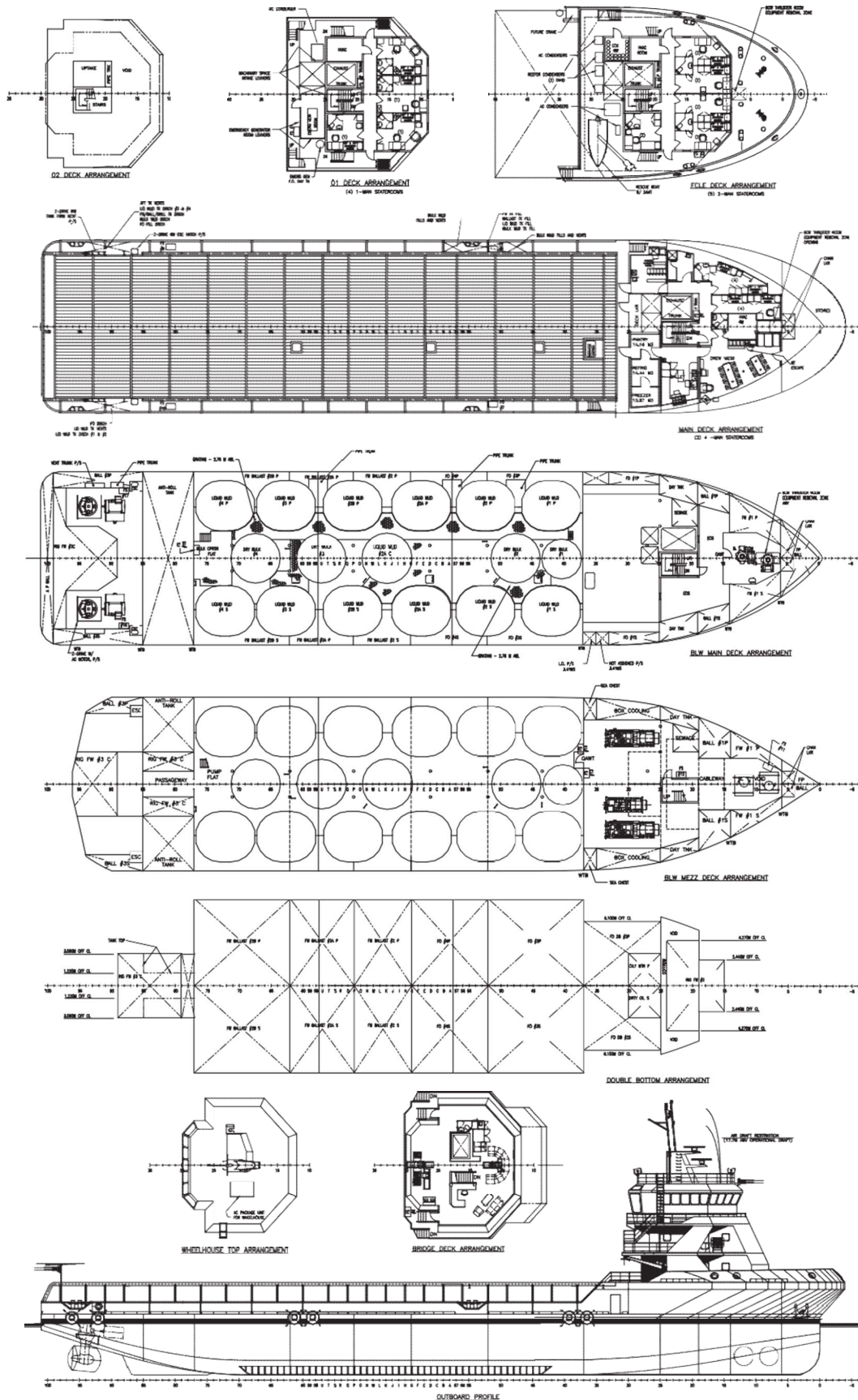
Nav/Comms Equipment

Radar(s):	2
Depth Sounder:	1
Gyro Compass:	3
Wind Speed Indicators:	2
Doppler Log:	1
Radio:	3 x VHF; 1 x SSB
Sat Com:	FURUNO FELCOM15

Special Equipment

Firefighting:	Fifi Other	1x 110 Fire Montior
Dynamic Positioning:	DP-2	
Ref. Systems:	2 x MRU; 2 x DGPS 1 x Microwave-based; 1 x Laser-based	
Mud Circulation System/ Mud Mixers:	Yes/Yes	
Tank Cleaning:	Yes	
Rescue Boat:	6-Man MOB 4.5A	
Misc:	MSD - 25 Persons; Moon Pool - 36" Dia.	

General Arrangement (Current configuration may vary.)



DP Capability Plot

